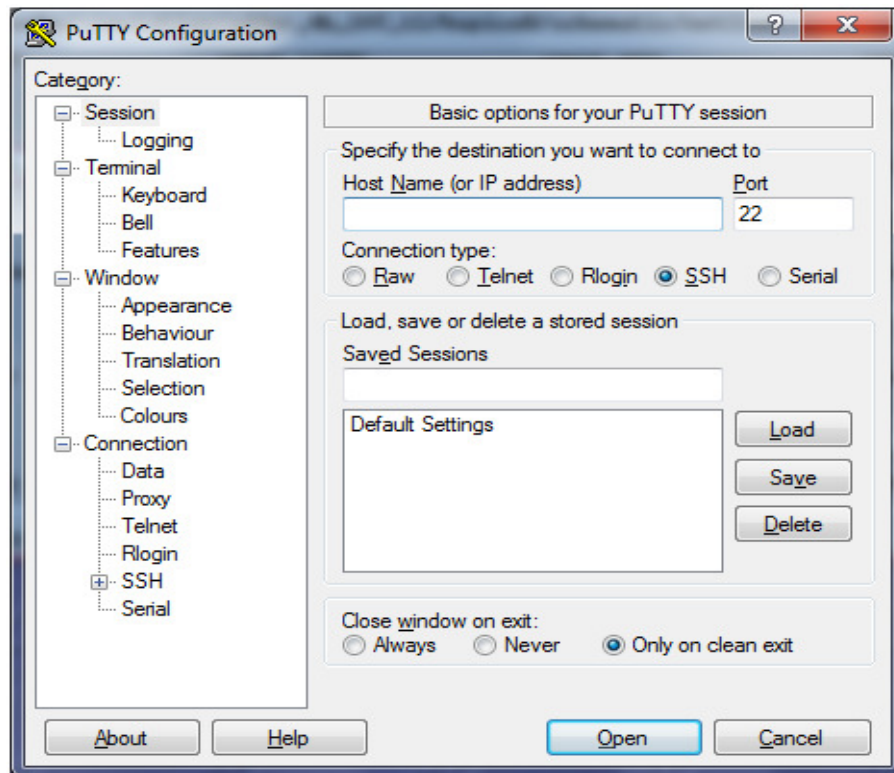
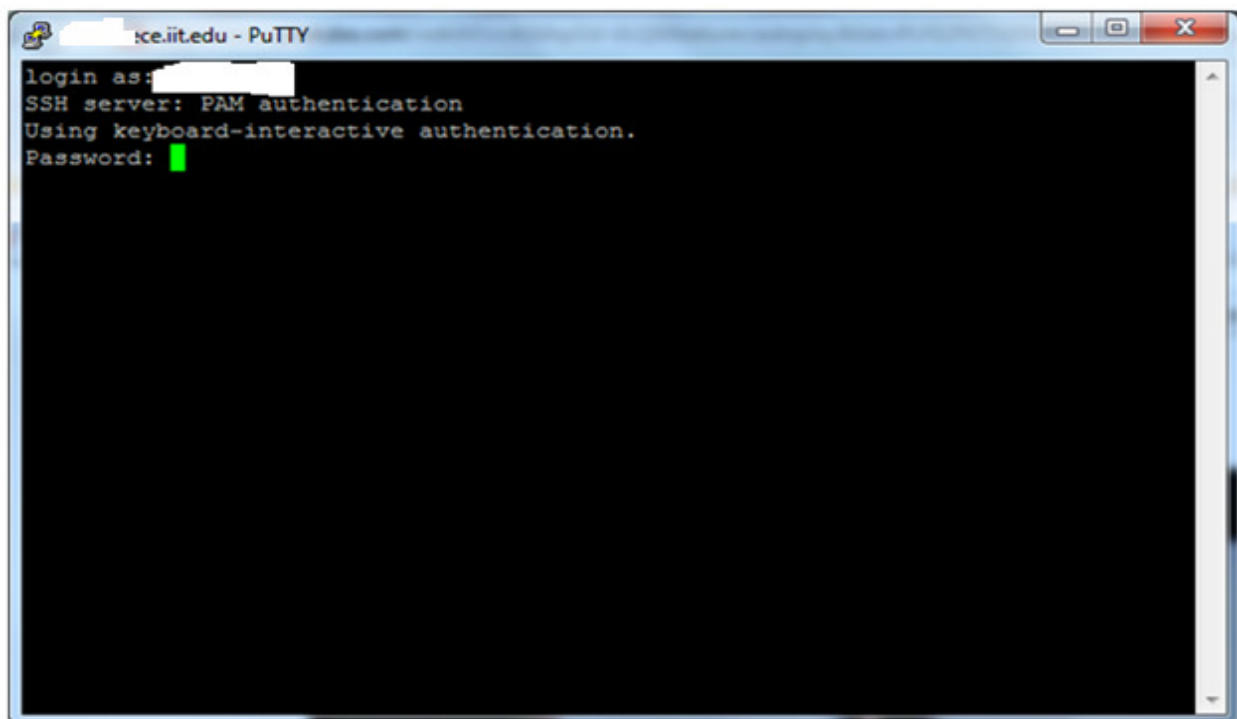


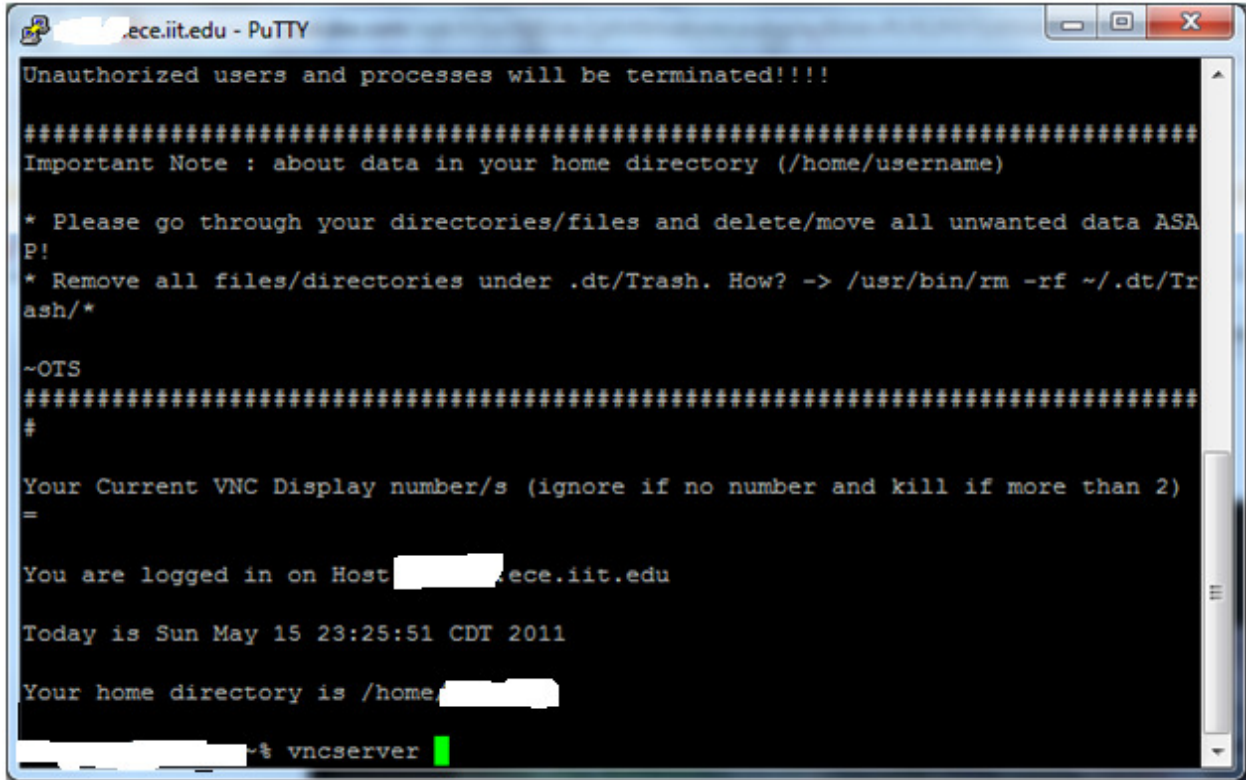
Putty Service is used to initiate remote connection to college desktop:



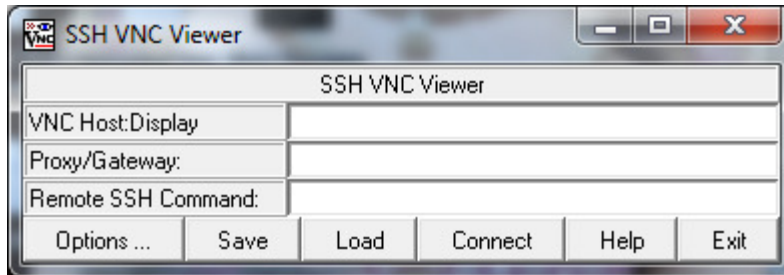
Remote UID and Password are required to establish the connection:



Once the putty connection is established, the VNCSERVER is established to connect to the remote desktop:



After VNCSERVER is established, VNCVIEWER is used to connect to the desktop:



Finally, the screen we view is the desktop of the computer in the lab in the university:

